

**TRACTEBEL ENGINEERING -member of the GDF SUEZ Group- is an Architect-Engineer and Consulting-Engineer active in the energy sector.**

**The Company was involved in ITER since more than 10 years through BELGATOM and the EFET grouping.**

### Assets & experiences

- a staff of 3300, among which more than 1000 graduate engineers and technical experts
- multidisciplinary competences and 40 years of experience in energy and nuclear technology
- Architect-Engineer for all seven Belgian NPP's with considerable experience in the field of PWR auxiliaries and cooling systems design
- large experience in accident transient analysis
- excellent knowledge of all the main regulatory systems, codes and standards
- operational experience at all Belgian NPP's
- radwaste management and fuel cycle activities
- ISO 9001 certification

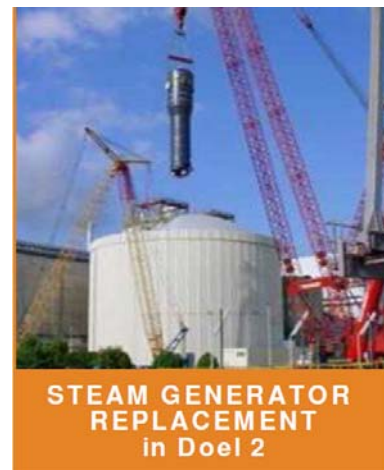
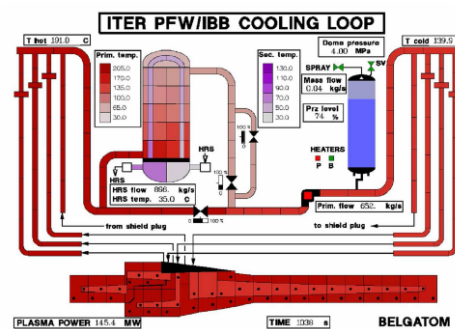
### TRACTEBEL ENGINEERING ITER experience

Some twenty projects in the EFDA framework:

- safety analyses, based on complex simulation models using the ATHENA thermal-hydraulic calculation code
- design studies of the Primary Heat Transfer Systems, the cooling systems, and the related auxiliary systems
- Site studies

TRACTEBEL ENGINEERING is interested in assignments for engineering and project management services, i.e. typical Owner's Engineer activities.

**TRACTEBEL Engineering**  
GDF SUEZ



### Contact Person

Jacques PIRSON  
Plant Design Manager  
Process & Systems  
Nuclear  
TRACTEBEL Engineering  
Brussels  
E-mail [jacques.pirson@gdfsuez.com](mailto:jacques.pirson@gdfsuez.com)

Tel. :+32 2 773 8377  
Mob.: +32 476 964118  
Fax :+32 2 773 8900  
[www.tractebel-engineering-gdfsuez.com](http://www.tractebel-engineering-gdfsuez.com)  
7, Avenue Ariane  
B-1200 Brussels  
BELGIUM